



Resort Home

SALES
Presents



CAVCO RESORT HOME MODEL - CF3244-2A

2 BEDROOM - 2 BATH - APPROX. 1062 SQ FT - SP #48

- * NORTH FACING HOME WITH A UNIQUE FLOOR PLAN
- * HOME HAS VAULTED CEILINGS WITH THE PEAK OF THE VAULT AT 9'
- * HOME OPENS INTO A LARGE GREAT ROOM / DINING ROOM AREA.
- * BEAUTIFUL DOVE GRAY CABINETS W/FLAT BLACK HARDWARE
- * PREMIUM S/S WHIRLPOOL APPLIANCES
- * LARGE MASTER BEDROOM W/ LARGE WALL TO WALL CLOSET
- * SPACIOUS LINEN CABINET IN MASTER BATHROOM
- * COMFY GUEST BEDROOM W/ GENEROUS CLOSET
- * PLUMBED FOR WASHER & DRYER W/OVERHEAD CABINETS



MODEL AS SHOWN PRICED AT \$160,400.*

*PRICES ARE SUBJECT TO CHANGE

+ PLUS SALES



RESORT HOME SALES

CAREFREE VILLAGE RESORT

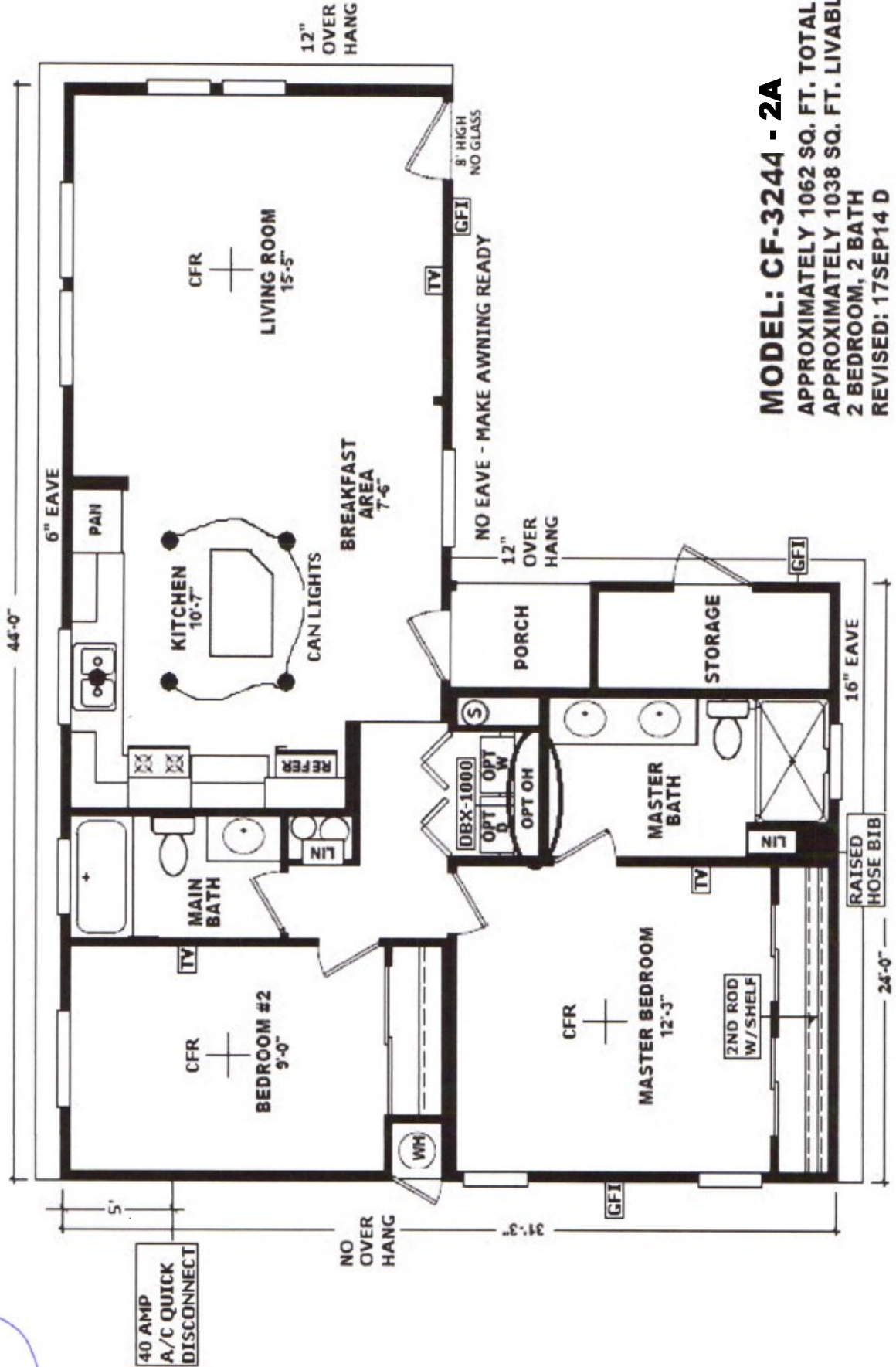
3900 S. AVENUE 8 1/2 E YUMA, AZ 85365

OFFICE: 928-342-7990

E-MAIL: RESORTHOMESALES1@GMAIL.COM

With many different options available, let us help you design your DREAM HOME!!!

STOP BY THE SALES OFFICE (#244) TO GET STARTED



MODEL: CF-3244 - 2A
 APPROXIMATELY 1062 SQ. FT. TOTAL
 APPROXIMATELY 1038 SQ. FT. LIVABLE
 2 BEDROOM, 2 BATH
 REVISED: 17SEP14 D